

THE

ARTUKOVICH

C O M P A N I E S

SINCE 1919



SERVICES AVAILABLE

- Sewer Pipelines
- Water Pipelines
- Welded Steel Pipelines
- Reclaimed Water Pipelines
- Storm Drain
- Dry Utility Conduit
- Sewer Rehabilitation
- Sliplining
- Emergency/On-Call Services
- Design-Build Projects
- Concrete Structures
- Pump Stations
- Mechanical Work
- Demolition
- Shoring
- Drilling and Blasting
- Tunnel, Shaft and Porthole Excavation
- Dewatering
- Traffic Control

Vido Artukovich & Son, Inc./ Vidmar Inc. a JV (Artukovich) is a locally owned and operated Joint Venture (JV) construction company specializing in pipeline construction. Artukovich is a result-oriented pipeline contractor that takes a proactive approach in providing quality work, while placing a high priority on maintaining integrity and professionalism, from the administrative level through the field personnel on the ground. Artukovich has been in business since 1919 and has extensive water, sewer and storm drain pipeline construction experience throughout California with business licenses extending to Arizona, Nevada and Hawaii. We maintain an excellent history of completing quality projects that are on schedule, within budget and with a minimum amount of change orders. Artukovich has a wide array of in-house, heavy underground construction capabilities that range from a 4 inch spot repair

to 12 foot diameter pipelines. Our Project Managers, Superintendents and Foreman specialize in installing some of the most demanding projects. We are proud to be a union contractor, employing an average of 75 skilled operators and laborers annually, depending on the size and scope of our projects. Our day-to-day logistics are supported by a fully staffed office and construction yard in South El Monte, California. From large cranes and excavators, to small pumps and miscellaneous hand tools, we maintain an extensive modern fleet of equipment capable of meeting all project-specific needs. Our in-house mechanics work diligently to hold all of our equipment to the highest standards required. Our mission is to provide the most qualified and experienced team available to safely complete quality work on time and within budget.



"In 1953, Artukovich made history in Los Angeles County by installing 12,000 feet of 12-foot diameter sewer pipeline; the largest in the county's history, utilizing the largest available crane at the time."

HISTORY

Artukovich is a family owned and operated construction company founded 1919 and has extensive project history that spans most of California. Nearly 100-years old, Artukovich has completed over \$2,000,000,000 of work with over 5,000,000 feet of pipeline including some of California's most massive underground water, sewer and storm drain pipelines including the California Aqueduct, Hetch Hetchy Aqueduct, Colorado Aqueduct and San Diego Aqueduct.

Artukovich began contracting with the City of Los Angeles and the Department of Water and Power as a sewer pipeline contractor. In 1923, Artukovich installed Los Angeles County Sanitation District's first pipeline. In the twenties and thirties, Artukovich installed sewer pipelines mostly within Southern California but quickly moved into water and storm drain pipelines in the mid 1930's, and grew into one of California's most prominent leaders in underground construction.

One of Artukovich's oldest exceptional waterline projects dates back to 1941. The company installed the Palos Verde Feeder Pipeline; 60,000 feet of 36-inch steel water line for the Metropolitan Water District. Another momentous project took place in 1951 when the company laid over 90,000 feet of 72-inch steel pipe for the San Francisco Water Department. In 1953, Artukovich made history in Los Angeles County by installing 12,000 feet of 12-foot diameter sewer pipeline; the largest in the county's history, utilizing the largest available crane at the time.

Vido Artukovich emigrated from Herzegovina in search

of the American Dream in 1912 and began working in pipeline construction for Vusich Construction. He was an assiduous worker and determined to understand all aspects of the pipeline construction business. Vido was able to save enough money to go into business with his two Croatian cousins, Jerry and John Artukovich; they created Artukovich Brothers in 1919. When the three men decided to go their separate ways, they did so without reverting to lawyers and long-winded legal proceedings. They simply divided all their equipment and assets into equal piles and drew straws.

After the split in 1950, Vido continued with Vido Artukovich Company which later became Vido Artukovich & Son, Inc. The company grew to new heights with the help of his son Anthony. After Vido's passing in 1964, Anthony became president of the company and furthered its success with his hard working approach.

Anthony continues to have an uncanny ability to walk onto a job site and within five minutes assess what is right and wrong with the project. Today three Artukovich's run the company; Anthony and his progeny Vido and Mark. The brothers are equal partners, Mark runs the estimating and administrative side of the business and Vido supervises field operations. In 1987, Vido and Mark partnered in their own construction company called Vidmar Inc., which works together as a joint venture with Artukovich. Today, Vido's son (Mark) works as a Foreman and Mark's son (Anthony) works in estimating.



CORE VALUES

The Artukovich Companies have spent nearly 100 years maintaining a reputation of promoting good will, friendliness and consideration. Artukovich demonstrates a special skill, responsibility and integrity in the field of heavy engineering construction. We conduct business efficiently and with a sound ethical business practice. Artukovich's core values; safety, integrity, professionalism, people and success, are the foundation of our company, which allow us to provide our clients with the highest quality of work, on time and in a safe environment.

Safety

We are committed to the safety and well-being of our employees, clients, subcontractors and the public with accident prevention. Our Safety Policy has equal importance with the company's standards to provide the best quality and most productive services in our industry.

Integrity

We conduct our business with the highest levels of integrity and ethical behavior at all times. We pride ourselves in being honest and forthright, taking responsibility for our actions.

Professionalism

Our experienced team of safe and competent leaders is the backbone of our company. Their determination and focus to produce the highest level of excellence, allows us to provide our clients with dependable results on time and within budget.

People

The relationships and commitments we build with our clients, partners, employee's and community are vital to the future of our company.

Success

Throughout nearly 100 years of contracting, Artukovich has experienced peaks and valleys but had continued success because of our high level of honesty and goodwill.

Our enduring ability to overcome complex issues with our experience in the field increases the confidence of our clients and continues our reputation. Running a business while retaining compassion and integrity will undoubtedly ensure that Artukovich continues for another century.



CAUTION
HARD HAT
REQUIRED
BEYOND THIS POINT

SAFETY & HEALTH

Artukovich is committed to the safety and wellbeing of our employees, clients, subcontractors and the public with accident prevention as our most important core value. We understand the characteristic dangers of heavy underground construction. This is why we emphasize the importance of on-the-job safety, which we implement through our Safety Policies and Procedures Manual A.K.A. IIPP (Injury & Illness Prevention Program).

It is our policy to provide a safe workplace for our employees and to observe all State and Federal Laws and Regulations. We maintain a safety and health program designed to train our employees to follow safe practices, and identify unsafe working conditions.

Safety is a part of each employee's job responsibilities. Active participation and adherence to the Safety Program is a condition of employment. We work together to make every workplace safe by detecting and correcting unsafe working conditions and practices. It is our goal to eliminate accidents and injuries.

The following objectives and goals have been established to gauge the success of our program, for a minimum guideline, and the Safety Plan is reviewed annually by the Safety Coordinator.

Objectives:

- To provide a safety and health program consistent with good operating practices and maintain compliance with applicable safety and health regulations, Cal/OSHA Section 3203 and the requirements of SB198, and other STATE plans that may be in effect.
- To create an attitude of safety consciousness within the management, supervision, and employees. We establish a spirit of cooperation and teamwork throughout all operations regarding all health and safety matters.

Our safety program includes:

- Preplanning for safety in every portion of the operation through active cooperation of management, drawing upon their expertise to anticipate/mitigate accident producing situations
- Provide mechanical and physical safeguards to the maximum extent possible in compliance with government regulations, i.e., State or Federal OSHA, Fire Codes, etc.
- Conduct a program of safety and health inspections to discover and correct unsafe working conditions or practices; to control health hazards; and to comply fully with the safety and health standards for each job, operations
- Safety training for all employees on good safety and health practices
- Providing the necessary personal protective equipment and instructions for its use and care
- Developing and enforcing safety and health rules and requiring all employees to cooperate with these rules as a condition of employment
- Investigating every accident promptly and correcting the problem to prevent recurrence

Our employees receive on going safety training that begins at their induction and continues on a daily basis. Our employees learn about: Confined Spaces, Work Zone Safety, First AID/CPR, Trench Shoring, Hazardous Material, Respiratory Protection, Safety Inspections and many complete the Competent Person Training Program administered by the National Utility Contractors Association (NUCA).

At the start of each day, supervisors conduct an inspection of any possible hazards and communicate any concerns with all employees. In addition, weekly meetings are administered by the Foreman known as a "tailgate talk" which allows crews to discuss important topics pertaining to specific jobs.



OUR TEAM

The corporate level of Artukovich is comprised of experienced technical leaders with over 200 years of combined experience working on pipeline infrastructure projects. Our uniquely qualified team is poised to demonstrate a deep commitment to working relationships with each of our clients and we work diligently to meet every expectation. Since the commencement in 1919, Artukovich has successfully completed well over two hundred major pipeline projects and maintains an experienced team with the qualifications to continue for another century.

Construction Approach

As a result-oriented pipeline contractor with an unquestioned reputation for quality construction, Artukovich takes a proactive approach to ensure the quality and integrity of our work, from the administrative level through to our field personnel on all our projects. Our individual project team ensures that quality and safety are addressed on every level and the integrity of the work is of utmost importance.

On each project, we develop a site-specific approach that strives to achieve a uniform and high quality level of workmanship throughout all phases of procurement, fabrication, construction, final testing and delivery.

After almost 100 years of experience, we have found that the keys to a successful project include:

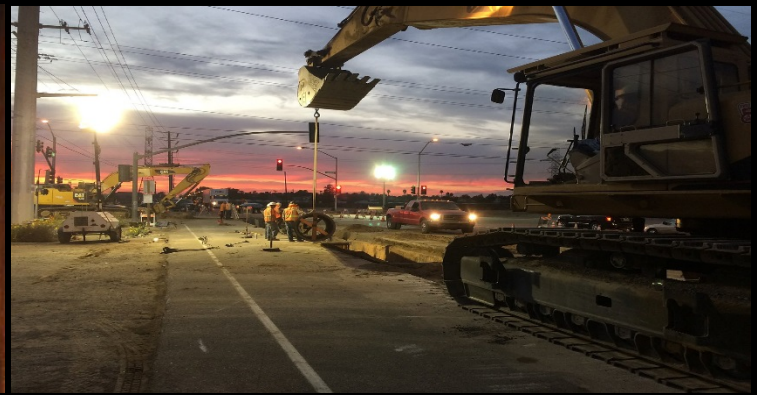
- Communication of expectations with the Owner, Supervisory Staff and Field Personnel
- Conformance with contractual requirements
- Adherence to the highest safety standards throughout the course of our work
- Detailed documentation of all inspection, tests, changed conditions in relation to the specific project
- Emphasis on quality workmanship and a finished project with adherence to the highest standards
- Earning client trust

Our project approach encompasses many, if not all, of the following components:

- Provide community outreach and resident notification of impending work to protect the interests of the Owner with as little impact possible
- Procure all necessary materials and equipment in a cost effective and timely manner to ensure prompt completion of the contemplated work
- Provide experienced field personnel to achieve the highest standard of workmanship
- Provide and closely supervise qualified subcontractors for site-specific specialty work such as SWPPP Plans and Storm Water Compliance, Survey, Soils Testing, etc.

Site Specific Methodology:

- Provide community outreach and notification to maintain positive community relations
- Maintain the highest possible safety standards to ensure the safety of all workmen and residents
- Generate and monitor project schedules to ensure timely completion of the anticipated work
- Procure all required materials necessary for timely completion of the anticipated work
- Perform all utility locations of known underground obstructions prior to excavation
- Mobilize all necessary men and equipment to perform work in a cost effective and timely manner
- Provide and monitor work involving specialty subcontractors through final completion
- Ensure all installations are properly tested and inspected and comply with the Owners requirements
- Coordinate final project completion and close out in close conjunction with the Owners personnel
- At the project close out, provide all necessary warranties and guarantees as required by the Owner



CAPABILITIES

Artukovich has constructed a variety of projects ranging in size and scope. Our multifaceted crews are designed to specifically execute a wide range of projects. Artukovich has completed some of California's most demanding construction projects. Our capabilities include:

- Sewer Pipelines
- Water Pipelines
- Welded Steel Pipelines
- Reclaimed Water Pipelines
- Storm Drain
- Dry Utility Conduit
- Sewer Rehabilitation
- Sliplining
- Emergency/On-Call Services
- Design-Build Projects
- Concrete Structures
- Pump Stations
- Mechanical Work
- Demolition
- Shoring
- Drilling and Blasting
- Tunnel, Shaft and Porthole Excavation
- Dewatering
- Traffic Control
- Paving
- 1166 Permit Work

Our capabilities enable us to provide our clients with the most innovative solutions in the underground construction field. Artukovich has established a reputation of meeting client needs using a safety-oriented, hardworking approach.

Our corporate team stays busy bidding contracts and responding to emergency jobs. We are listed on over a dozen emergency on-call lists for cities and municipalities throughout Southern California. With some of the most experienced crews in California, and an extensive fleet of modern equipment, we can handle any emergency regardless of its complexity. It is our goal to respond to each emergency quickly and safely.

Artukovich is one of the few contractors possessing the ability and experience with design-build projects. With the help of our design partners, Artukovich has the expertise to design the piping and mechanical aspects, including electrical, structural and civil design. Our team understands the complexities and challenges of design-build construction and can provide project management, planning, design, and construction services to deliver these projects. Our success is based on our knowledge of projects goals and experience with design and construction projects.



PROJECT HISTORY

Artukovich's project history is comprised of the construction of both large and small diameter pipelines. A typical project consists planning and assembling an efficient crew to excavate, lay and backfill the pipeline. Jobs vary from 40 ft deep in sandy or wet conditions requiring solid sheet shoring to 100% blasting through Granite Rock. Some of our notable projects include:

- Barrel Number 3: 52,000 feet of 72-inch welded steel pipe, 60-70% slopes 100% blasting
- Irvine California: 40,000 feet of 72-inch pipeline
- Third San Diego Aqueduct Pipeline: 50,000 feet of 96-inch PCP
- San Diego Pipeline No.5: 55,000-feet of 96-inch CMLC Welded Steel Pipeline

Metropolitan Water District

- Palos Verde Feeder: 60,000 feet of 36-inch water line
- Ramona Pipeline through Baldwin Park: 42,000 feet of 72-inch water line
- Barrel Number 2: 52,000 feet of 72-inch Steel/RCP water line installed on slopes of 60 and 70% slopes with 100% blasting of blue granite rock
- 57th Street Job: 50,000 feet of 54-inch welded steel water line
- El Segundo to South Gate: 94,000 feet of 54-inch welded steel pipeline

San Francisco Water Department

- Bay Division Pipeline Number 3: 90,000 feet of 72-inch welded steel pipe
- Bay Division Pipeline Number 4, Section "A" and Pipeline No.3 of the Alameda Creek Siphon: 45,000 feet of 96-inch Steel Pipeline including 190 feet of jacked pipe
- Bay Division Pipeline Number 5: 90,000 feet of 91-inch welded steel pipe

Los Angeles County Sanitation District

- Joint Outfall "B" Unit 1-A: 12,000 feet of 144-inch and 4,000 feet of smaller diameter pipe, the largest pipeline in Los Angeles County's history
- Interceptor Sewer, Section 2: 7,200 feet of 63-inch to 57-inch RCP of which 405 feet of which were jacked
- Interceptor Trunk Sewer, Section 1B: 5,800 feet of 75-inch and 42-inch RCP
- Interceptor Trunk Sewer, Section 2: 7,000 feet 24-inch and 18-inch VCP
- Joint-Outfall No. D, Unit 6: 12,000 feet of 39-inch and 33-inch RCP
- 6,000 feet of 21-inch and 12-inch VCP sewer
- North Long Beach Interceptor Sewer, Section 3: 10,000 feet of 21-inch VCP
- El Nido Relief Trunk Sewer, Section No.2, 6,000 feet of 21-inch VCP
- Joint Out-Fall J, Unit 1D Replacement Trunk Sewer: 3,447 feet of 30-inch and 24-inch HDPE fusion pipe
- Trunk E Replacement Sewer, Section 1: 8,029 feet of 30-inch and 24-inch VCP
- North Long Beach Interceptor Sewer Section No.4: 10,000 feet of 27-inch and 24-inch VCP
- Wadsworth Ave-Long Street Trunk Sewer: 6,022 feet of 18-inch and 8-inch VCP
- Mountain View Bell-Vernon Trunk Sewer: 2,367 feet of 24-inch and 4-inch VCP Sewer

Los Angeles County Flood Control

- Storm Drain Project 6401: 8,000 feet of 57-inch and 15-inch RCP pipe
- Storm Drain Projects 734 and 7201: 4,210 feet of 72-inch and 18-inch RCP pipe
- Storm Drain Project 1402: 7,500 feet of 57-inch and 15-inch RCP pipe
- Sepulveda Boulevard Extension B, Project 645 and Los Angeles Project 5224: 6,500 feet of 96-inch and 18-inch RCP pipe

- Storm Drain Project 496, Unit III, Franklin Canyon and Los Angeles Project 5237: 13,200 feet of 78-inch and 18-inch
- Storm Project 5211: 12,000 feet of 75-inch and 18-inch RCP pipe
- Storm Drain Project 6450: 13,000 feet of 63-inch and 18-inch RCP
- Storm Drain Project 9008, Unit 2: 3,500 feet of 72-inch and 18-inch RCP
- Storm Drain Project 9617: 5,000 feet of 60-inch and 18-inch RCP
- Storm Drain Project 9641, South Pasadena, Unit 2, Lines B, C and D: 8,500 feet of 48-inch and 18-inch RCP

City of San Diego

- Metropolitan Sewer in San Diego: 30,000 feet of 87-inch sewer 27 feet below sea level in where a large section crossed the San Diego bay
- Carroll Canyon Trunk Sewer: 35,000 feet of 33-inch and 15-inch VCP
- Contract Water Group 531 B: 9,507 feet of 16-inch PVC and 8-inch PVC waterline
- Miramar Road Pipeline: 25,000 feet of 36-inch CMLC Welded Steel pipeline

San Diego County Water Authority

- Barrel Number 4: 50,000 feet of 72-inch water
- Fourth Aqueduct: 56,000 feet of 91-inch RCP 60- 70% slopes, 100% blasting
- Another Barrel of of Aqueduct Number 4: 55,000 feet of 78-inch PCP pipe
- Rehabilitation of Pipeline No.3: 6,000-feet of 57-inch steel re-liner, the first re-lining project for the San Diego County Water Authority.

City of Los Angeles Department of Water and Power

- Franklin – Venice Trunk Line, Unit IIB: 13,000 feet of 54-inch Welded Steel Pipe and 277 feet of 66-inch pipe casing

City of Los Angeles Department of Public Works

- Emergency Sewer and Storm Drain Work \$5,000 to \$15,000,000
- North Outfall Sewer, Phase 2: Relining of 2,820 feet of 48-inch x 56-inch Arch Sewer and 48-inch brick sewer. By-passing 27 million gallons of sewer daily for 9 month over the LA River, over 12,000 feet of 24-inch HDPE pipe, the largest sewage bypass system ever in the City of Los Angeles

West Basin Municipal Water District

- Basin Recycling Program Contract R5: 25,000 feet of 48-inch and 36-inch CMLC Welded Steel Pipeline
- Brine Line Pipeline: 28,600 feet of 14-inch PVC and 5,700 feet of 30-inch and 24-inch Welded Steel pipe and 5,700 feet of 12-inch Nitrified Product Lines
- NRG Pipeline: 8,559 feet of 10-inch PVC reclaimed water line through methods of open trench excavation and pipe-jacking under highways, along with electrical vault work. This project was under contract with the City of El Segundo for the NRG power plant

Moulton Niguel Water District

- Trabuco Interceptor Trunk Sewer: 34,000 feet of 39-inch and 30-inch VCP sewer
- Transmission Mains, Contract 4-3-1: 16,000 feet of 36-inch and 16-inch Steel and AC water lines

City of Redondo Beach

- 1-HUD-4, North Redondo Beach Project, Project 9804 Redondo Beach, Unit 1, Lines A and C: 4,800 feet of 78-inch and 18-inch RCP
- Pacific Coast Highway and Beryl Street Storm Drain: 5,400 feet of 84-inch and 18-inch RCP

Aliso Water Management Agency

- Aliso Creek Outfall On-Shore Portion: 5,800 feet of 48-inch RCP, 5,800 feet of 24-inch ACP and 5,000 feet of 8-inch and 12-inch ACP pipelines
- North Coast Interceptor: 17,000 feet of 27-inch and 21-inch VCP, ACP and fiberglass pipelines

City of Escondido

- Center City Parkway / Mission Avenue Trunk Sewer: 4,654 feet of 27-inch and 8-inch sewer
- East Valley Parkway: 16,250 feet of 12-inch and 6-inch water line

Los Angeles County Department of Public Works

- Topanga- Fernwood Replacement Pipeline: 4,000 feet of 18-inch steel water line with two bridge crossings
- 4,000 feet of 18-inch CML&C steel pipeline

Irvine Ranch Water District

- 10,000 feet of 42-inch and 36-inch sewer
- 9,500 feet of 18-inch CML&C steel pipe, 5,000 feet of 12-inch PVC pipe

Yorba Linda Water District

- 9,365 feet of 30-inch CML&C Steel water line
- 10,000 feet of 12-inch and 8-inch PVC water main, 3,950 feet of 12-inch and 8-inch VCP sewer

South Coast Water District

- Inspected and Repaired 18,000 feet of 60-inch pre-stressed water line
- 2,065 feet of 30-inch CML&C water main, 280 feet of 10-inch PVC water main

City of Huntington Beach

- Warner Avenue Gravity Sewer and Sewer Pump Station: 5,000 feet of 16-inch sewer force main. 100% dewatering with ground water at -4-feet. Excavation to 29-feet deep. Construct new pump station and valve vault
- Trinidad Lift Station No. 29 and Force Main Sewer: 400 feet of 4-inch force main, 300 feet of 8-inch gravity sewer, demo and removal of existing structure and construction of new lift station with electrical and all appurtenances.

City of Vista

- 23,900 feet of 48-inch Interceptor Sewer and 36-inch and 24-inch VCP sewer

Arvin Edison Water Storage District

- Discharge Pipeline for the pumping plant and two siphons: 19,100 feet of 132-inch PCP and two 144-inch siphons

City of Monrovia

- Strom Drain Project 5601 in the Cities of Monrovia and Arcadia: 5,000 feet of 60-inch and 18-inch RCP pipeline.

San Dieguito Irrigation District

- 8,700 feet of 54-inch welded steel pipe and 6,500-feet of ACP

City of Cucamonga Water District

- Truck Sewer Lines: 70,000-feet of 21-inch and 8-inch RPMP pipeline.

City of Inglewood

- Water Transmission Mains, Unit 11: 50,000 feet of 27-inch and 12-inch CML&C Steel Pipeline

Orange County Sanitation District

- Yorba Linda Force Main: 7,000 feet of 30-inch DIP

Rio San Diego Municipal Water District

- 5,500 feet of 36-inch steel water pipeline

City of National City

- Sewer Project No.2: 37,000 feet of 18-inch and 4-inch VCP

City of Brea

- High Pressure Water Mains, Phase I, II and III: 17,000 feet of 36-inch and 33-inch CMLC Steel Pipeline

County of San Diego

- Jamacha Boulevard Trunk Sewer, Phase III-A, Project YEO127: 20,000 feet of 15-inch and 12-inch sewer

City of Santa Rosa

- Effluent Disposal System, Phase IV: 35,000 feet of 42-inch and 33-inch CMLC Steel pipeline

City of Corona

- Temescal Basin Blending System, Schedule I: 22,800 feet of 30-inch and 18-inch PCC waterline

Helix Water District

- Flume Replacement Project 9211: 16,000 feet of 48-inch and 39-inch CMLC Steel Pipeline, 5,400 feet of 12-inch and 20-inch ACP and 1,826 feet of a 39-inch pipe tunnel replacement

Leucadia County Water District

- Green Valley Interceptor: 5,600 feet of 24-inch VCP

Crescenta Valley County Water District

- Wastewater Collection System, Schedule 2: 35,000 feet of 15-inch and 6-inch VCP

Calleguas Municipal Water District

- Oxnard Santa Rosa Feeder, Unit 3: 10,500 feet 54-inch CMLC Welded Steel Pipeline

Santa Clara Valley Water District

- Cross Valley Pipeline, Phase IV and Anderson Force Main & Coyote Discharge Line: 10,500 feet of 78-inch PCP water line.

County of San Joaquin

- East Stockton Sanitary Project, Schedule D: 135,000 feet of 18-inch and 8-inch PVC Sewer and 2,500 6-inch and 4-inch house connections

Yucaipa Valley Water District

- Improvements of Assessment District No.5: 40,000 feet of 12-inch and 8-inch VCP

Hesperia Water District

- District No.2: 24,608 feet of 12-inch PVC Sewer

Mesa Consolidation Water District

- Southwest Transmission Main: 9,949 feet of 16-inch water mains

Santa Margarita Water District

- South County Pipeline Project: 13,000 feet of 49-inch CMLC Welded Steel Pipe, 10,000 feet of 18-inch CMLC Welded Steel Pipeline and 10,000 feet of 16-inch PVC raw water

Los Angeles County Department of Public Works

- Vincent Street Drain: 9,400 feet of 78-inch RCP

City of Newport Beach Water Utilities Department

- Ground Water Development Project Reach 1: 8,452 feet of 36-inch and 16-inch DIP water mains

City of San Juan Capistrano

- Trabuco De La Vista Sewer / Calle Santa Barbara to Oso Road: 4,510 feet of 15-inch and 8-inch VCP Sewer

Whispering Palms Community Sanitation District

- La Zanja Canyon Assessment District Sewer, Section 1: 24,769 feet of 18-inch and 10-inch PVC Sewer line

City of Long Beach

- Elm Avenue Interceptor Sewer / Broadway Trunk Line: 3,063 feet of 18-inch and 10-inch VCP Sewer

City of Simi Valley

- 20,000-feet of 27-inch concrete pipeline
- Los Angeles Street Sewer: 2,200 feet of 22-inch Hobas Sewer

City of Glendale Department of Water and Power

- Diederich Reservoir Backup Pipeline: 3,050 feet of 30-inch water main and tied into 55 million gallon Diederich Reservoir

City of Santa Fe Springs

- I-5 Water Main Relocation Pipeline: 8,027 feet of 12-inch DIP, 4,045 feet of 14-inch DIP and 4,070 feet of 16-inch DIP with all appurtenances, Tunnel and Bore Shafts. This was for the I-5 Carmenita Road Expansion Segment

City of Pasadena Department of Water and Power

- Eastside Well Collector Pipeline: 22,000 feet of 24-inch, 20-inch and 16-inch DIP water mains

Chino Basin Desalter Authority

- Chino Desalter Phase 3 Product Water Pipeline: 37,000 feet of 30-inch CML&C Welded Steel Pipe and appurtenance including micro tunneling 900 feet of 42-inch steel casing under the Santa Ana River, 2,000 feet of 42-inch Pipe Jacking and 5 turnout structures

US Army Corps of Engineers- Los Angeles District

- Carson Mall Lateral Phase II: 4,416 feet of 12-inch PVC and 229 feet of 12-inch DI water main

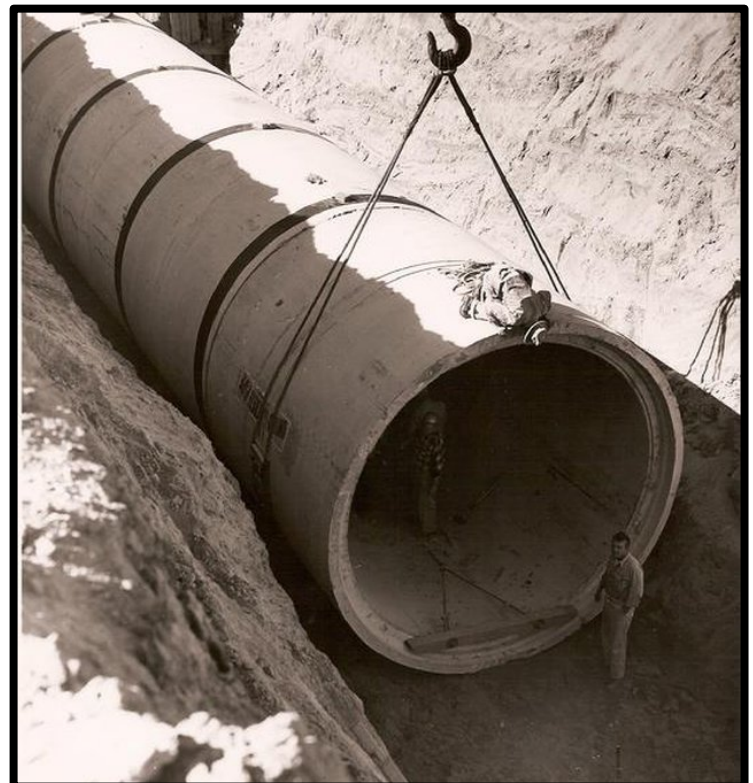
with 115 feet of 24-inch bore and jack casing and all appurtenances

City of Santa Ana

- Bristol Street Water Main Replacement Project: 4,708 feet of 16-inch PVC 905 DR14 water line with all appurtenances

City of Malibu

- Civic Center Wastewater Treatment Facility-Phase 1, Pipelines and Pump Stations Project: 10,660 feet of 2-inch fiber optic, 13,360 feet of 8-inch, 6-inch and 4-inch HDPE recycled water, 10,240 feet of 8-inch and 6-inch HDPE sewer force main, 10,490 feet of 14-inch, 12-inch, 10-inch, 8-inch and 6-inch HDPE sanitary sewer, 4,067 feet of 42-inch, 36-inch, 30-inch and 24-inch bore and jack steel casing. Installation of 2 pump stations, 3 injections wells plus all appurtenances and tie into treatment plant



Vido Artukovich & Son Inc./ Vidmar Inc. a JV

Artukovich Since 1919

11155 Rush Street

South El Monte, CA 91733

Telephone: 626-444-4286 Email: info@artukovich.com

www.artukovich.com